

FiberMax_{HP} Series

Multi-Axis Photonics Alignment System

2nd-generation photonics alignment platform built on high-performance ANT nanopositioners

Up to 6 axes of precision motion

Proven reliability for 24/7 manufacturing

Noncontact, direct-drive for all axes enabling high-throughput alignment

Minimum incremental motion to 2 nm on linear motion and 0.05 μ rad on rotary motion

Powerful controls with standard scanning algorithms and virtual pivot-point kinematics

Flexible design with many standard configurations and options

Interface to industry-standard power meters

Aerotech's FiberMax[®]_{HP} represents a significant breakthrough in the high-volume manufacturing and testing of photonics components. The FiberMax_{HP} reflects more than 40 years of experience in designing advanced positioning systems for OEMs and end-users in the high-technology industries. The FiberMax_{HP} is a second-generation three- to six-axes photonics alignment platform built on Aerotech's ANT nanopositioning product line. It is designed to meet the demanding needs of critical photonics alignment in a highly automated, 24/7 production environment with no compromise in speed, accuracy, and resolution.

A highly repeatable, precise, and industrial-grade positioning system is the foundation for high-volume manufacturing and testing of photonics components. FiberMax_{HP}'s highly reliable, unique drive and control technologies ensure many years of maintenance-free service in a high throughput, 24/7 manufacturing environment.

Ultra-Precision Direct-Drive

As alignment tolerances become smaller with new silicon photonics devices, the requirement for high-speed and high-accuracy alignment is essential. FiberMax_{HP} noncontact



FiberMax_{HP}-ZXY

direct-drive technology enables high-precision alignment without sacrificing production throughput. Capable of minimum incremental motion down to 2 nm coupled with speeds to 400 mm/s, the FiberMax_{HP} meets the challenges of aligning next-generation photonics packages.

The direct-drive technology employed in FiberMax_{HP} offers a significant precision and throughput advantage over other alignment platforms.

Powerful Kinematics and Scanning Routines

Aerotech's controllers work with a variety of smart cameras and machine vision systems to help facilitate first light. Our power servo scanning algorithms can be called to optimize power coupled through the devices. Standard scanning routines include fast align, hill climb, spiral, and raster searches in up to six axes of motion.

Our advanced kinematics enable a virtual pivot point where rotation can occur at any user-defined point in space rather than the physical rotation point of the FiberMax_{HP} axes. This assists the speed and accuracy of active alignment. We have an extensive range of software and hardware options to suit your specific needs.

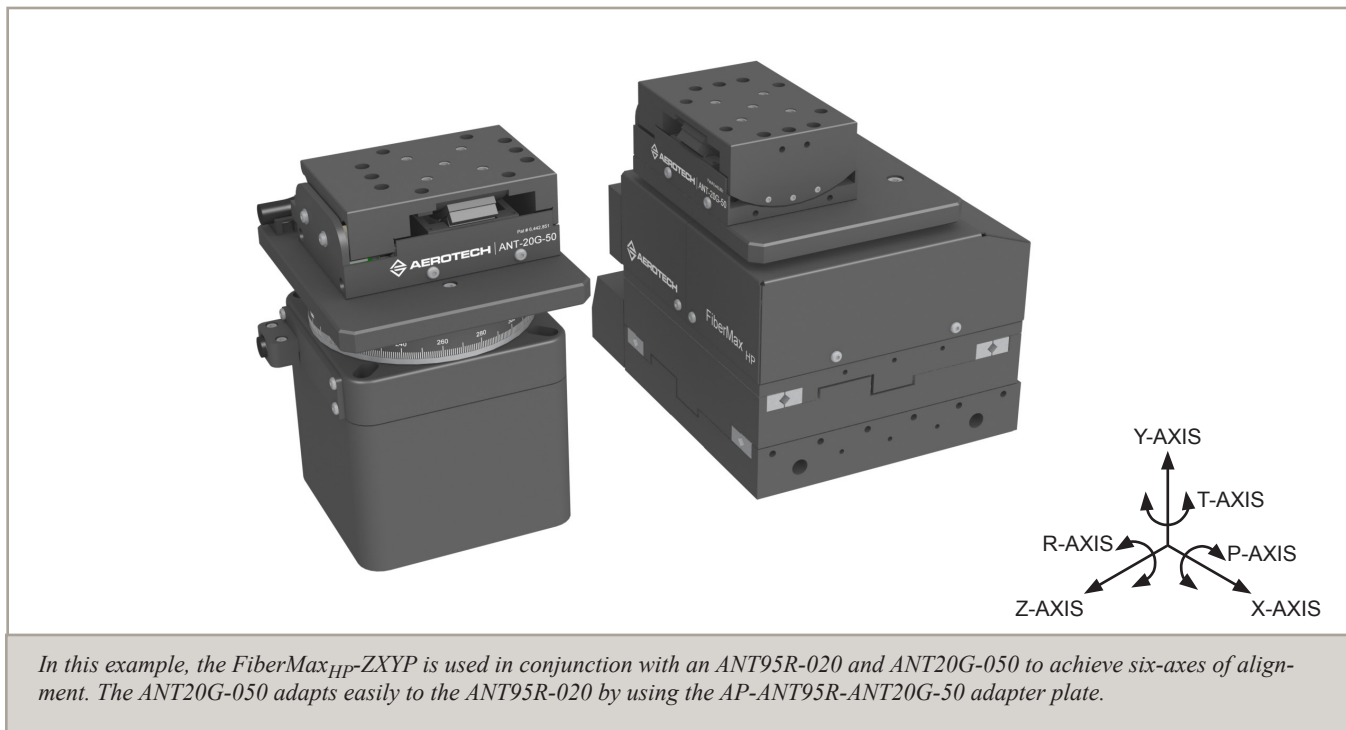
Flexible System Configuration

The FiberMax_{HP} is available with three- to six-axes of direct-drive alignment axes allowing the platform to be specified with the exact number of axes needed for the application. Since many applications require manual adjustment of fixtures and parts for a one-time initial

FiberMax_{HP} Series DESCRIPTION

alignment, the FiberMax_{HP} comes with one- to three-axes of manual angular alignment axes with $\pm 2^\circ$ of motion. These manual adjustment axes mount directly to the direct-drive platform and offer a more economical approach to alignment when adjustment is not frequently required.

Aerotech has many years of experience providing solutions to the photonics industry. We realize that your application may be unique and require customization. The FiberMax_{HP} is a modular design and can be easily customized with special arrangement of axes, fixturing, and mounting patterns to meet the needs of your specific application.



FiberMax_{HP} Series SPECIFICATIONS

FiberMax _{HP}		-ZXY	-ZXYT	-ZXYR	-ZXYP	-ZXYTR	-ZXYTP	-ZXYTPR
Travels		X: 50 mm Y: 3 mm Z: 50 mm	X: 50 mm Y: 3 mm Z: 50 mm T: 20 deg	X: 50 mm Y: 3 mm Z: 50 mm R: 20 deg	X: 50 mm Y: 3 mm Z: 50 mm P: 20 deg	X: 50 mm Y: 3 mm Z: 50 mm T: 20 deg R: 20 deg	X: 50 mm Y: 3 mm Z: 50 mm T: 20 deg P: 20 deg	X: 50 mm Y: 3 mm Z: 50 mm T: 20 deg P: 20 deg R: 20 deg
Accuracy^(2,3)	Base Performance (-PL1)	X: ±3.0 μm Y: ±2.0 μm Z: ±3.5 μm	X: ±4.2 μm Y: ±2.0 μm Z: ±4.7 μm T: ±25 μrad	X: ±4.2 μm Y: ±2.0 μm Z: ±4.7 μm R: ±90 μrad	X: ±4.2 μm Y: ±2.0 μm Z: ±4.7 μm P: ±90 μrad	X: ±5.5 μm Y: ±2.0 μm Z: ±6.0 μm T: ±25 μrad R: ±90 μrad	X: ±5.5 μm Y: ±2.0 μm Z: ±6.0 μm T: ±25 μrad P: ±90 μrad	X: ±6.5 μm Y: ±2.0 μm Z: ±7.0 μm T: ±25 μrad P/R: ±90 μrad
	PLUS Performance (-PL3)	X: ±300 nm Y: ±200 nm Z: ±300 nm	X: ±300 nm Y: ±200 nm Z: ±300 nm T: ±8 μrad	X: ±300 nm Y: ±200 nm Z: ±300 nm R: ±30 μrad	X: ±300 nm Y: ±200 nm Z: ±300 nm P: ±30 μrad	X: ±350 nm Y: ±200 nm Z: ±350 nm T: ±8 μrad R: ±30 μrad	X: ±350 nm Y: ±200 nm Z: ±350 nm T: ±8 μrad P: ±30 μrad	X: ±400 nm Y: ±200 nm Z: ±400 nm T: ±8 μrad P/R: ±30 μrad
Resolution (Min. Incremental Motion)		2 nm	X/Y/Z: 2 nm T: 0.05 μrad	X/Y/Z: 2 nm R: 0.25 μrad	X/Y/Z: 2 nm P: 0.25 μrad	X/Z: 3 nm Y: 2 nm T: 0.05 μrad R: 0.25 μrad	X/Z: 3 nm Y: 2 nm T: 0.05 μrad P: 0.25 μrad	X/Z: 4 nm Y: 2 nm T: 0.05 μrad P/R: 0.25 μrad
Bidirectional Repeatability⁽³⁾		±150 nm	X/Z: ±175 nm Y: ±150 nm T: ±3.5 μrad	X/Z: ±175 nm Y: ±150 nm R: ±18 μrad	X/Z: ±175 nm Y: ±150 nm P: ±18 μrad	X/Z: ±200 nm Y: ±150 nm T: ±3.5 μrad R: ±18 μrad	X/Z: ±200 nm Y: ±150 nm T: ±3.5 μrad P: ±18 μrad	X/Z: ±250 nm Y: ±150 nm T: ±3.5 μrad P/R: ±18 μrad
Maximum Speed⁽⁴⁾		X: 400 mm/s Y: 75 mm/s Z: 200 mm/s	X: 400 mm/s Y: 75 mm/s Z: 200 mm/s T: 120 deg/s	X: 400 mm/s Y: 75 mm/s Z: 200 mm/s R: 150 deg/s	X: 400 mm/s Y: 75 mm/s Z: 200 mm/s P: 150 deg/s	X: 400 mm/s Y: 75 mm/s Z: 200 mm/s T: 120 deg/s R: 150 deg/s	X: 400 mm/s Y: 75 mm/s Z: 200 mm/s T: 120 deg/s P: 150 deg/s	X: 400 mm/s Y: 75 mm/s Z: 200 mm/s T: 120 deg/s P/R: 150 deg/s
Load Capacity⁽⁵⁾		2 kg	1.5 kg	1.5 kg	1.5 kg	1 kg	1 kg	1 kg
Stage Mass		6.0 kg	7.5 kg	6.5 kg	6.5 kg	8.0 kg	8.0 kg	9.0 kg
Material		Anodized Aluminum						
MTBF (Mean Time Between Failure)		30,000 Hours						

Notes:

1. Values listed are per axis measured 20 mm off of top mounting platform.
2. Requires Aerotech controller.
3. Certified with each system.
4. Requires the selection of an appropriate amplifier with sufficient voltage and current.
5. On-axis loading.

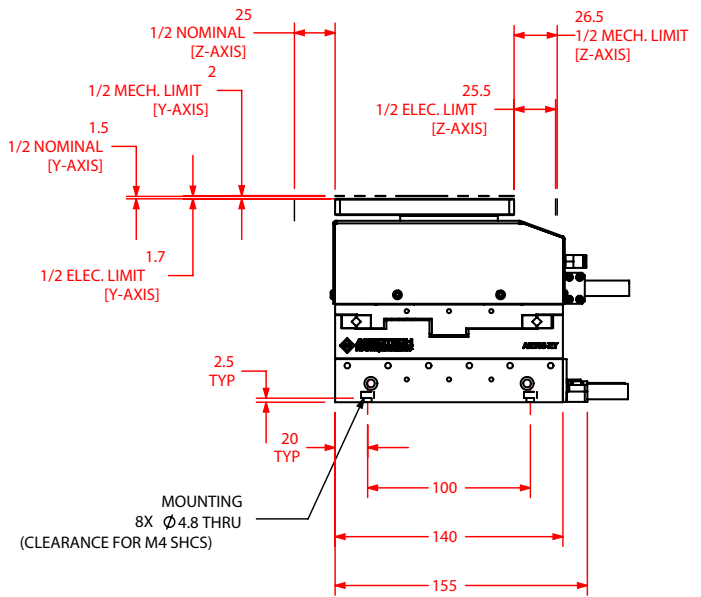
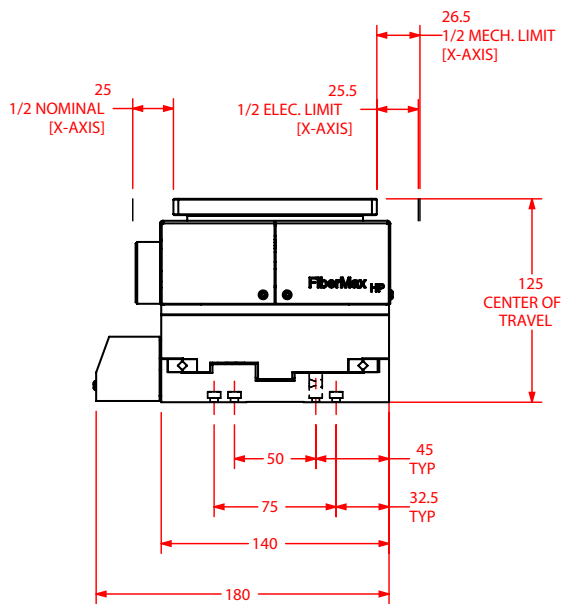
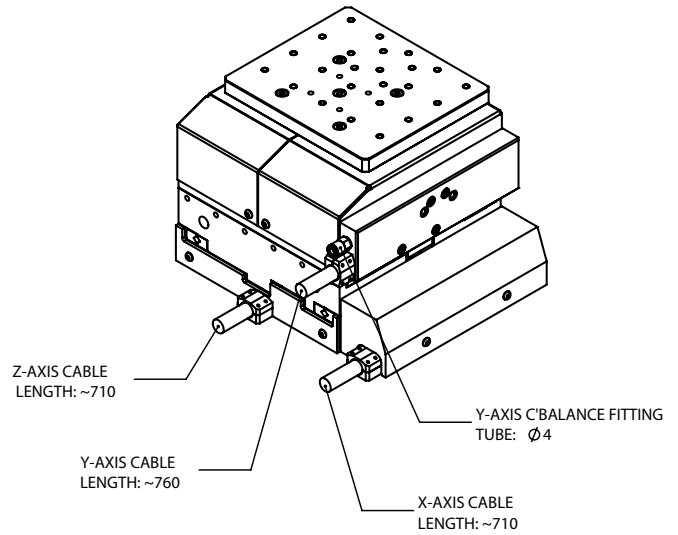
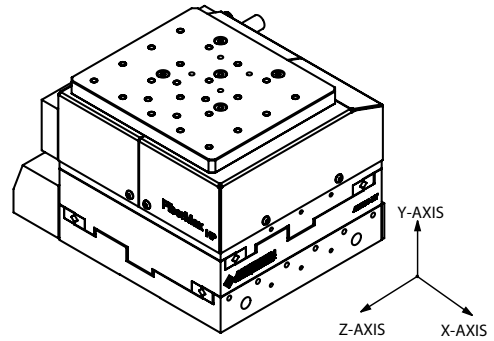
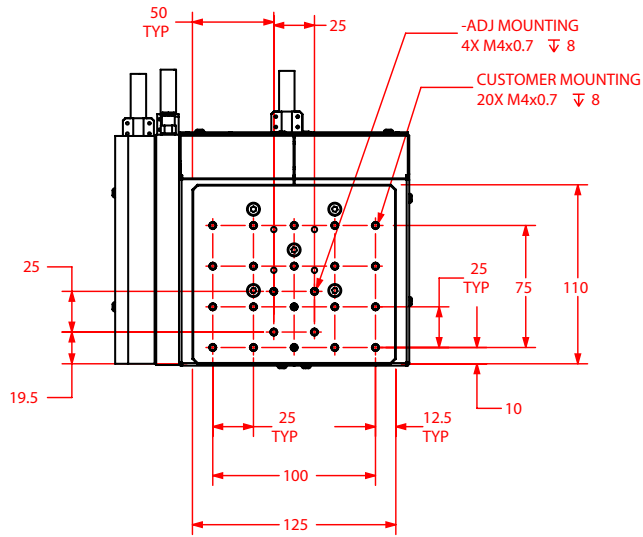
Electrical Specifications	
Drive System	Brushless Servomotor
Feedback	Noncontact Linear Encoder
Maximum Bus Voltage	80 VDC
Limit Switches	5 V, Normally Closed
Home Switch	Near Center of Travel

Recommended Controller	
A3200	Npaq MXR Npaq MR-MXH Ndrive ML-MXH

Note: Linear amplifiers are required to achieve the listed specifications. Other options are available.

FiberMax_{HP} Series DIMENSIONS

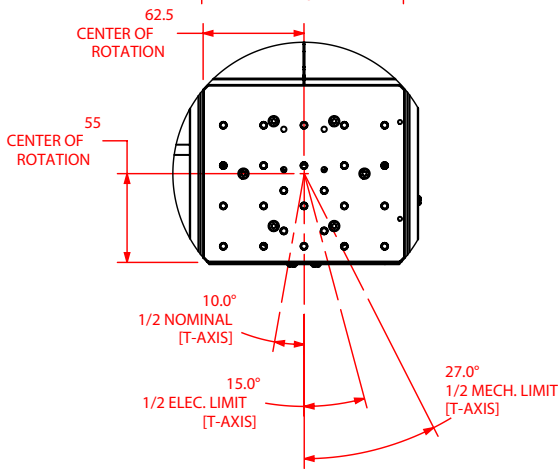
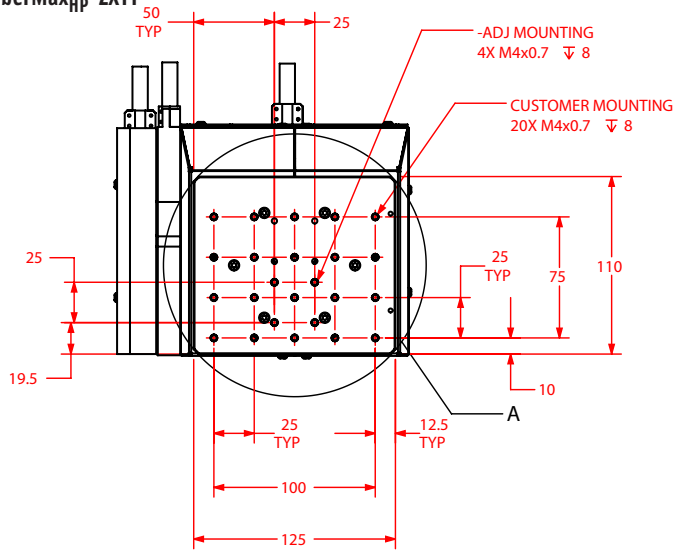
FiberMax_{HP}-ZXY



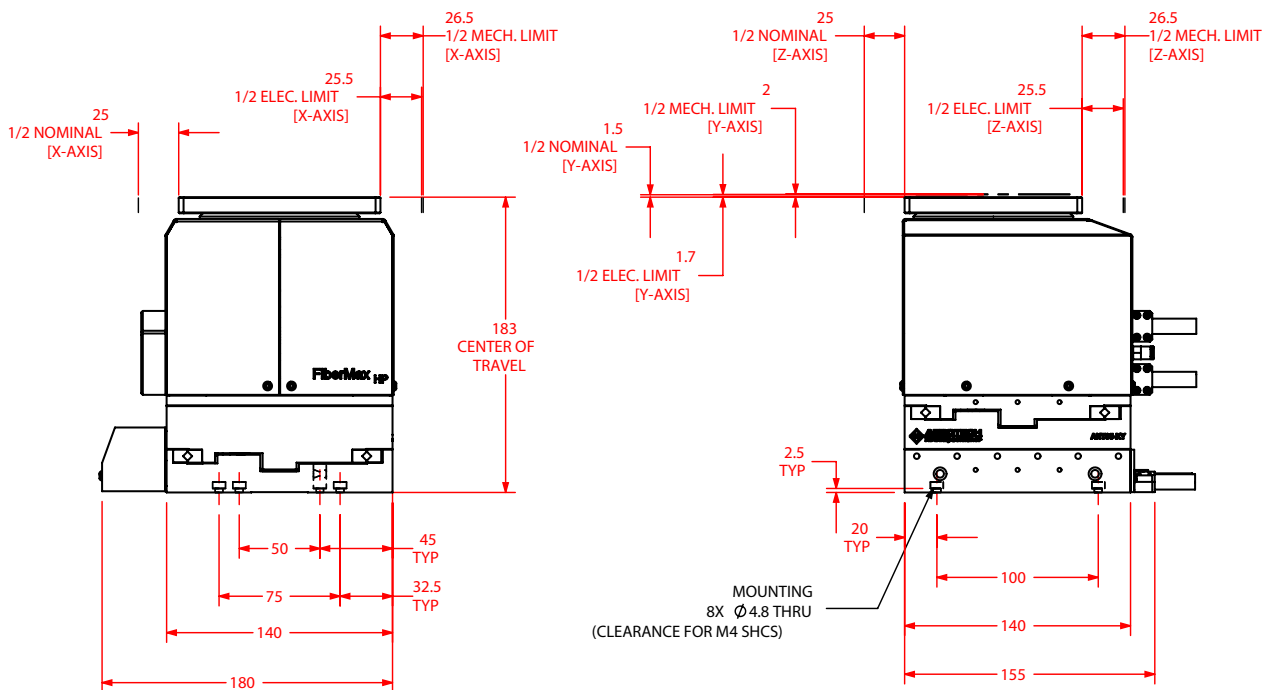
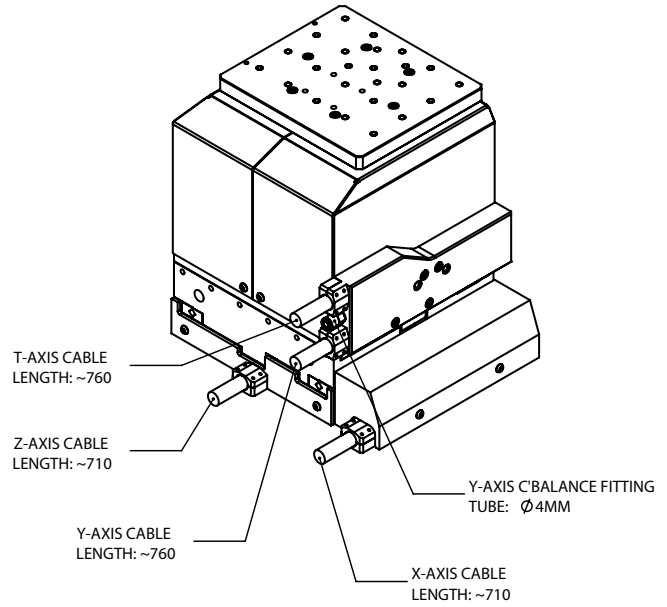
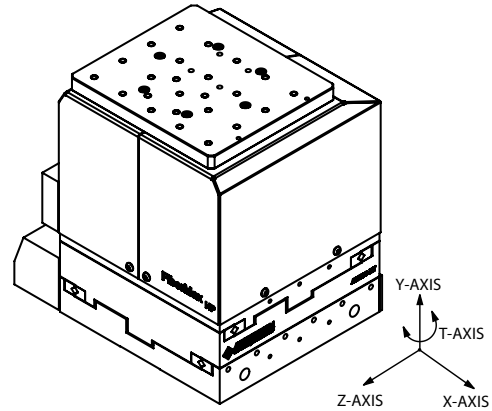
DIMENSIONS: MILLIMETERS

FiberMax_{HP} Series DIMENSIONS

FiberMax_{HP}-ZXYT



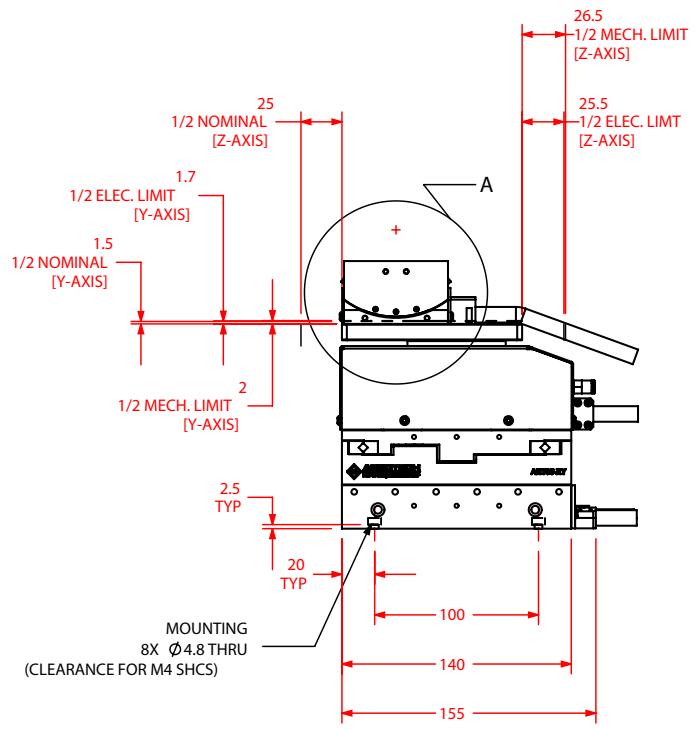
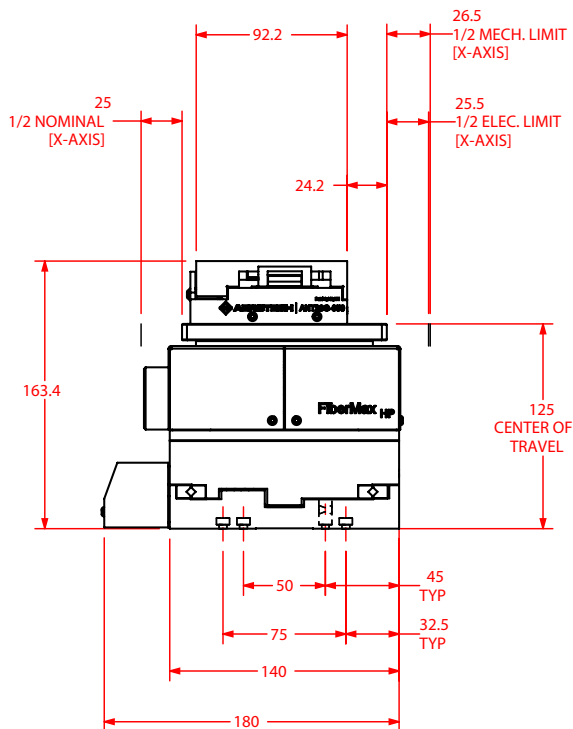
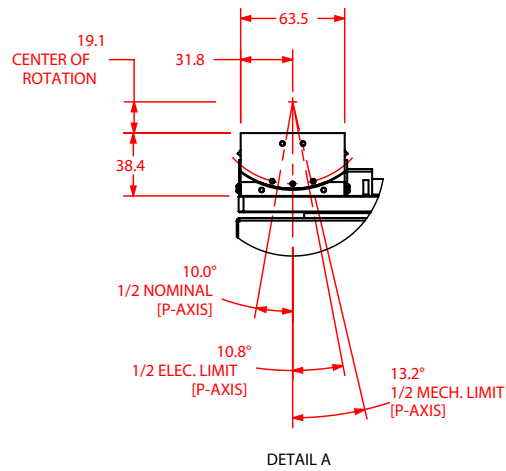
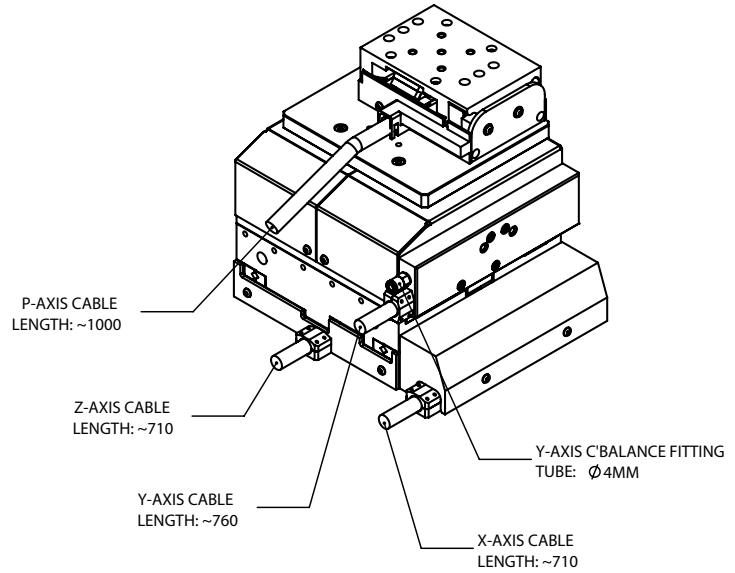
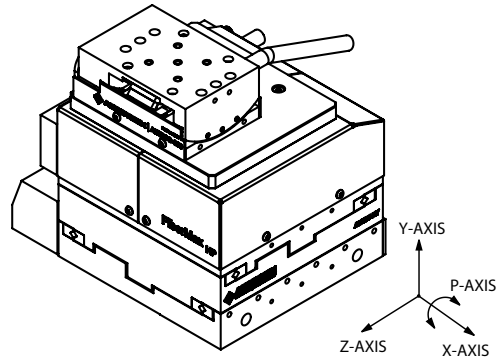
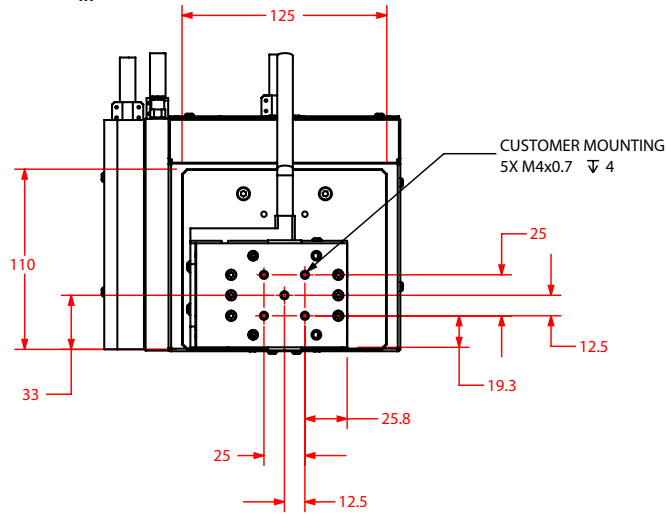
DETAIL A



DIMENSIONS: MILLIMETERS

FiberMax_{HP} Series DIMENSIONS

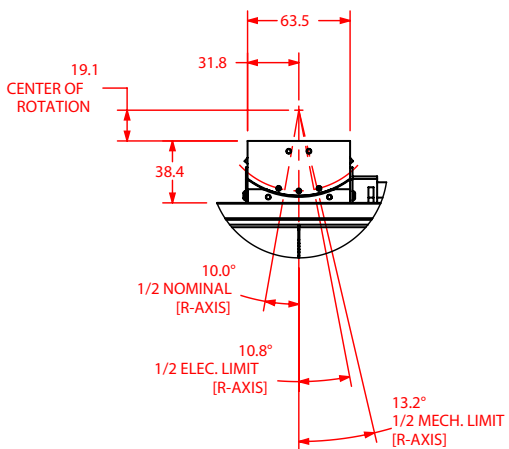
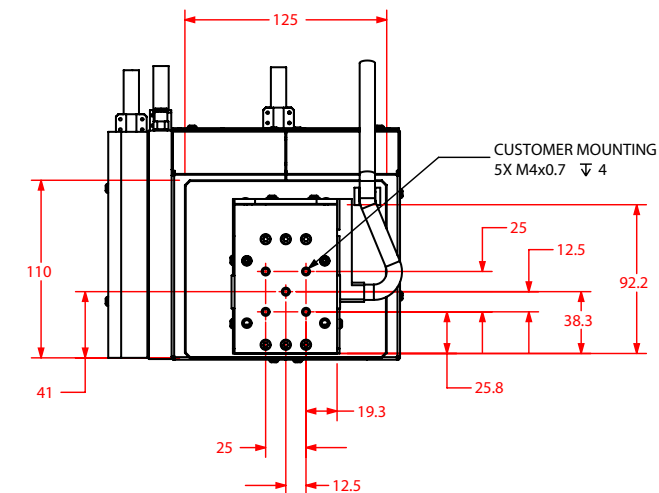
FiberMax_{HP}-ZXYP



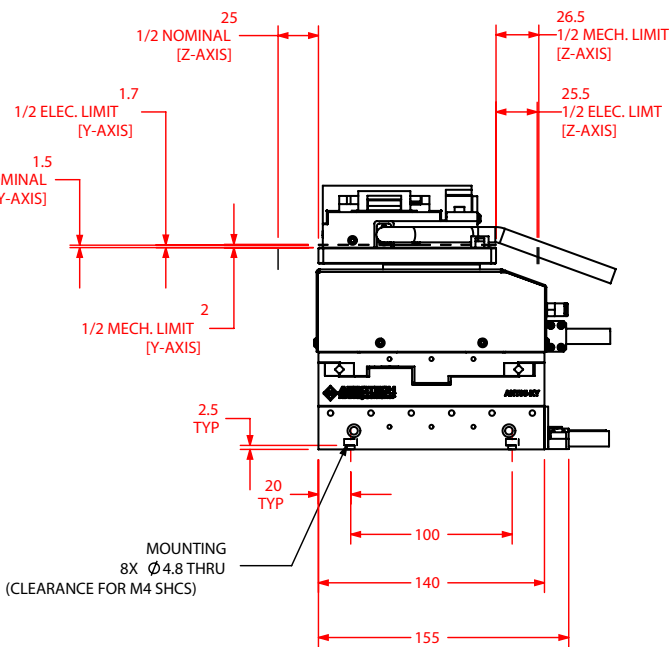
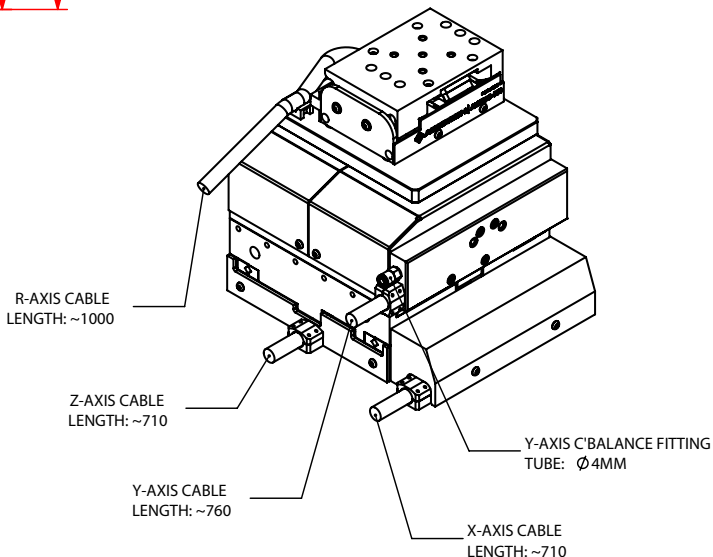
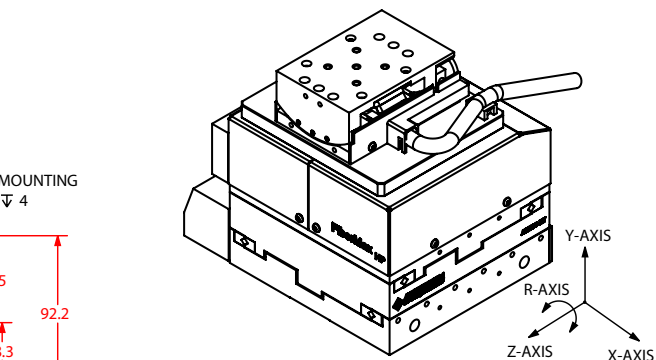
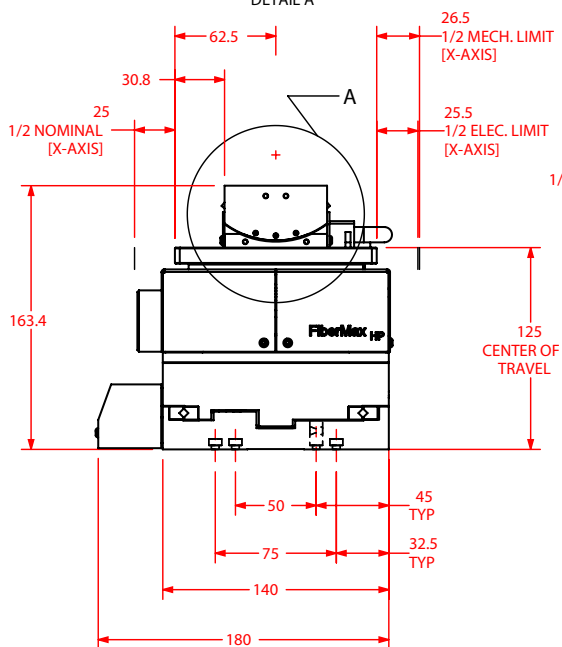
DIMENSIONS: MILLIMETERS

www.aerotech.com

FiberMax_{HP}-ZYR



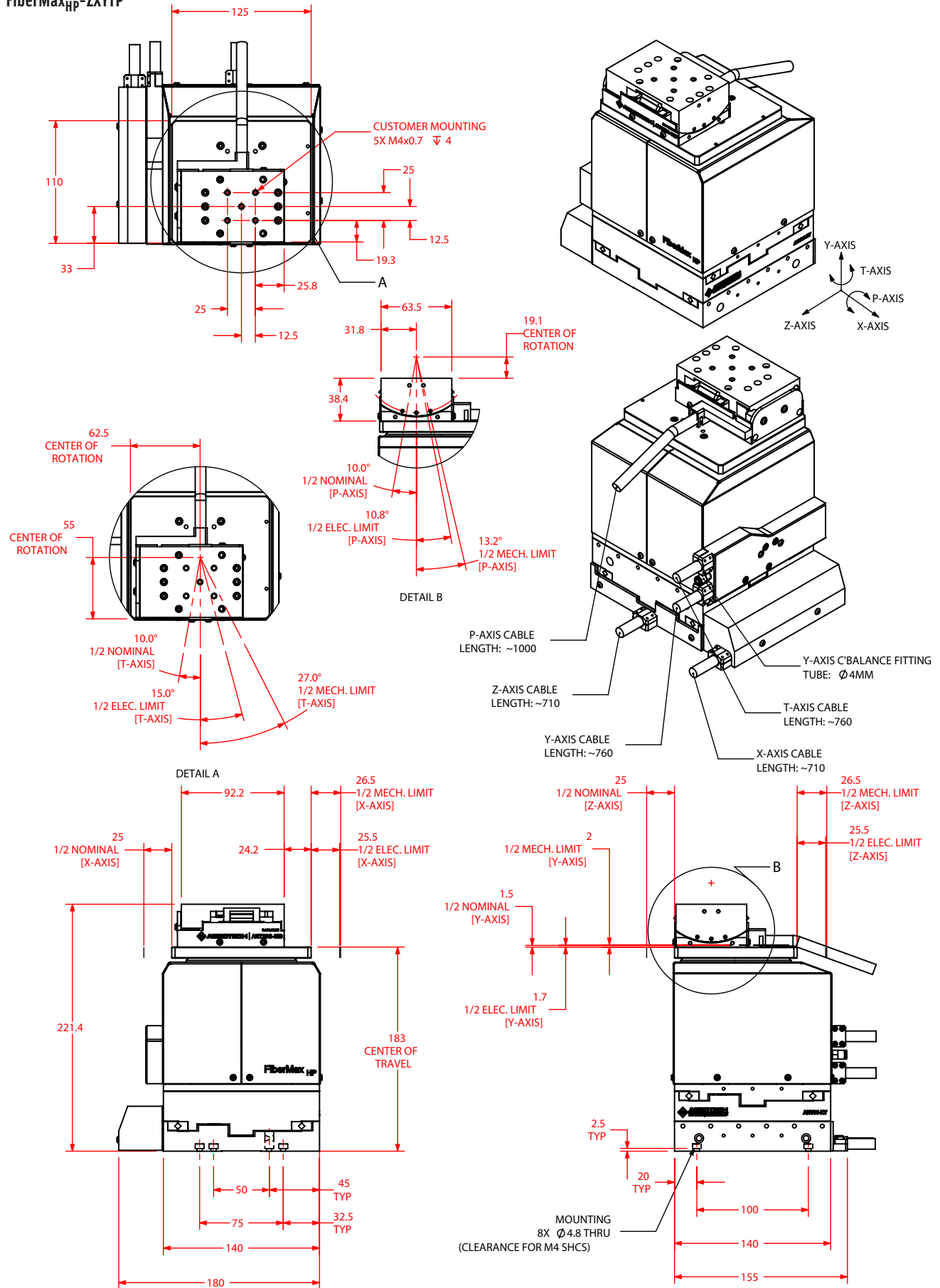
DETAIL A



MOUNTING
8X Ø4.8 THRU
(CLEARANCE FOR M4 SHCS)

FiberMax_{HP} Series DIMENSIONS

FiberMax_{HP}-ZYTP

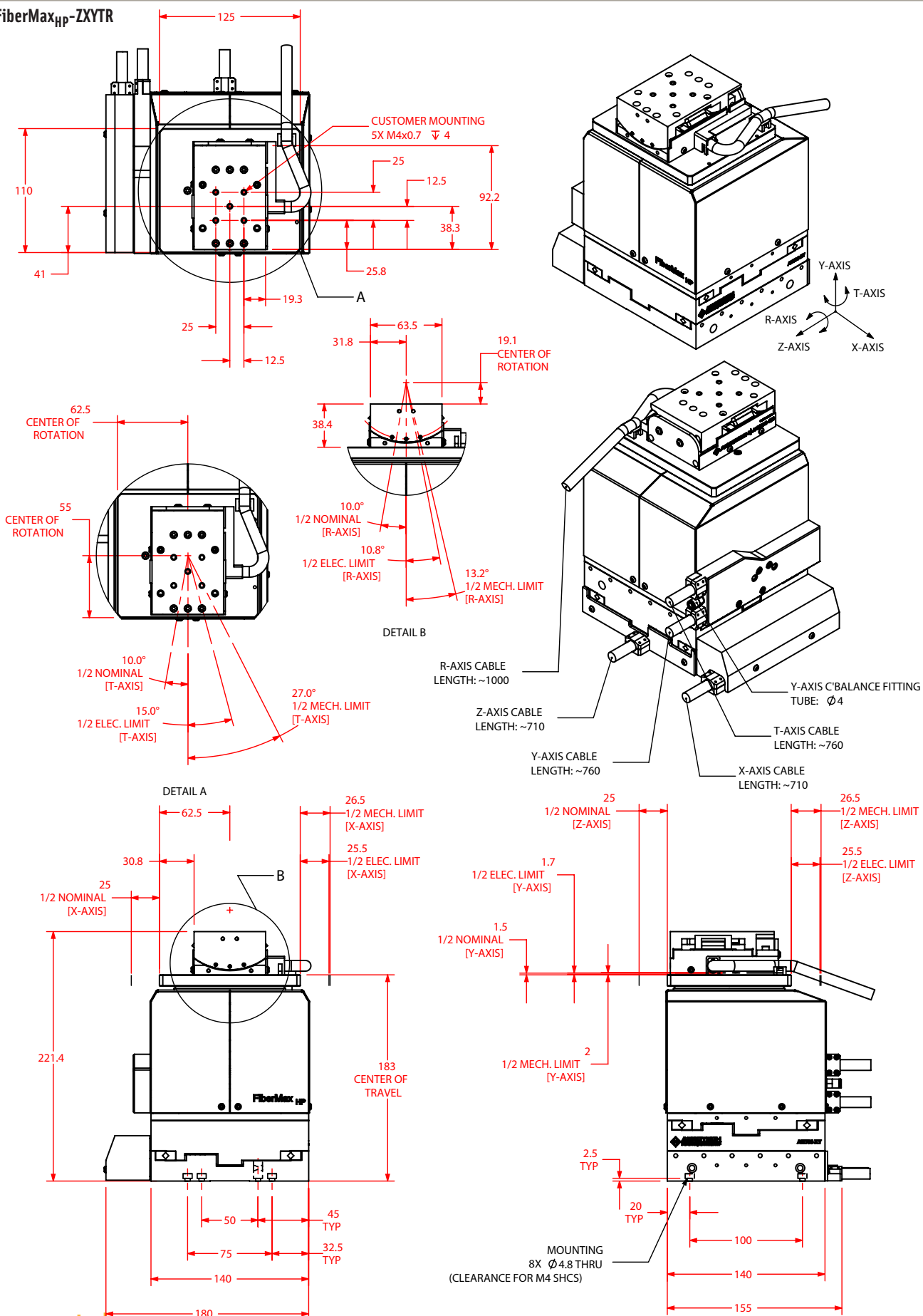


DIMENSIONS: MILLIMETERS

www.aerotech.com

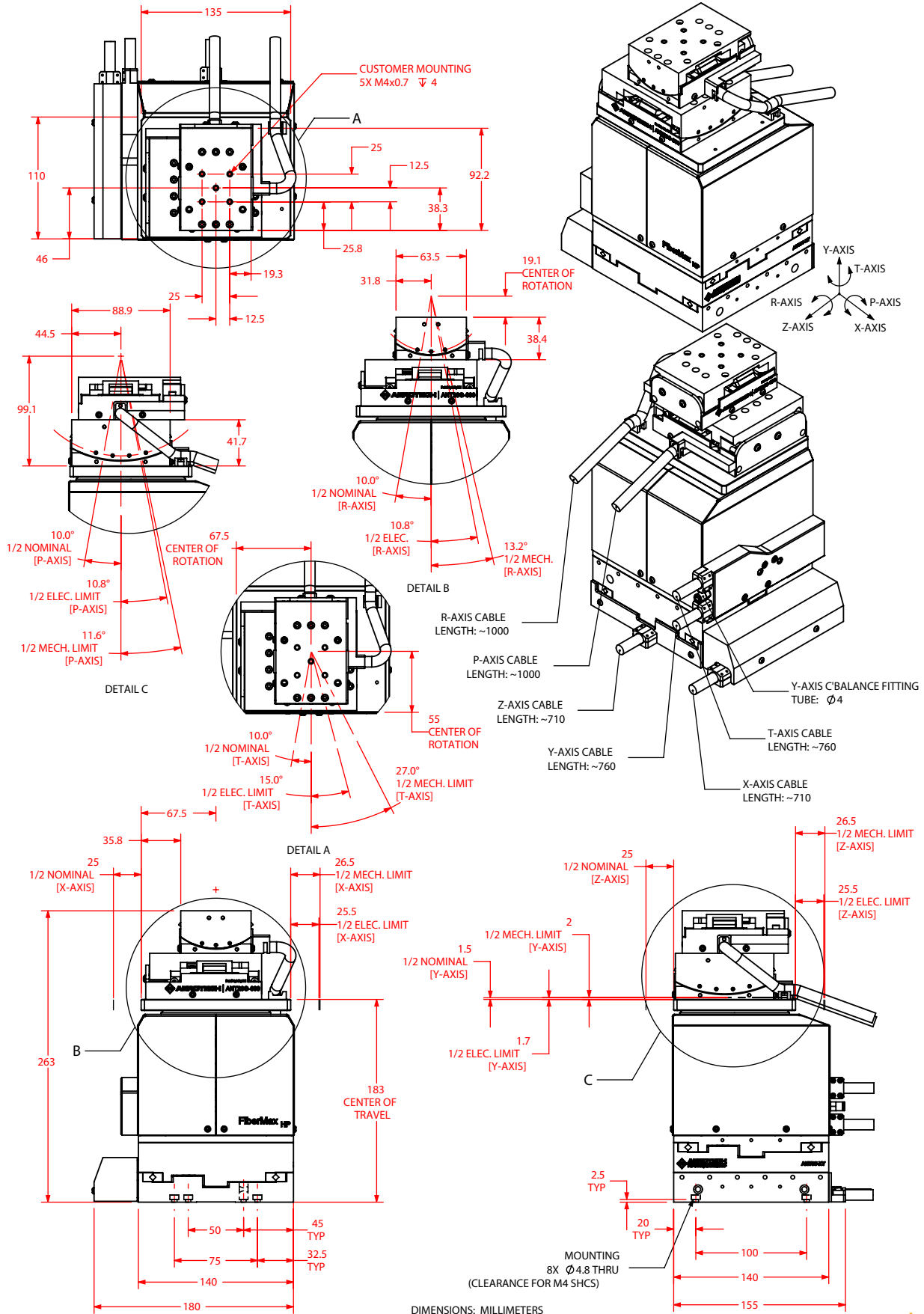
FiberMax_{HP} Series DIMENSIONS

FiberMax_{HP}-ZXYTR



FiberMax_{HP} Series DIMENSIONS

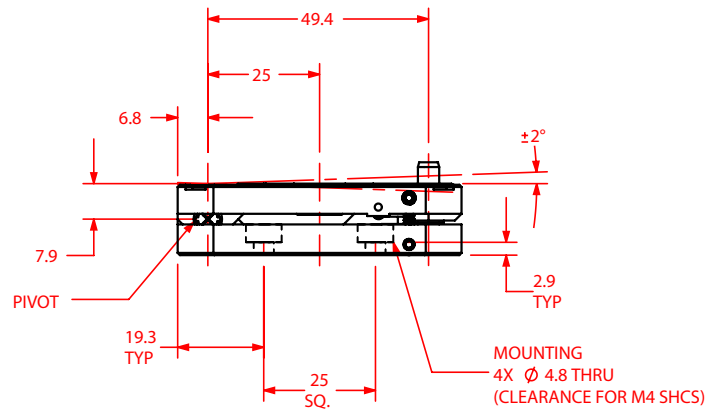
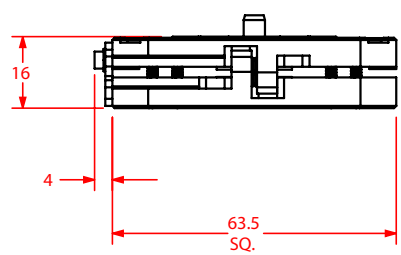
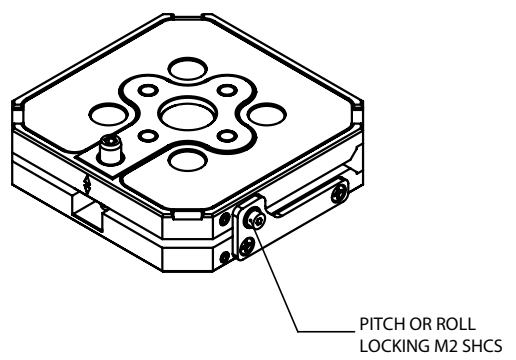
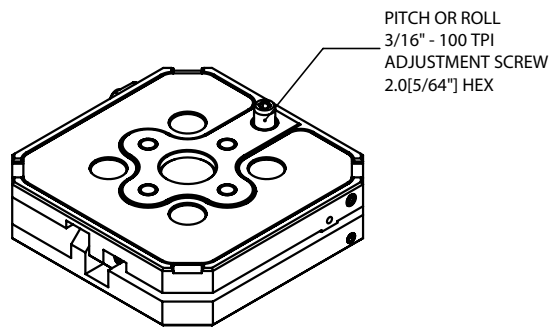
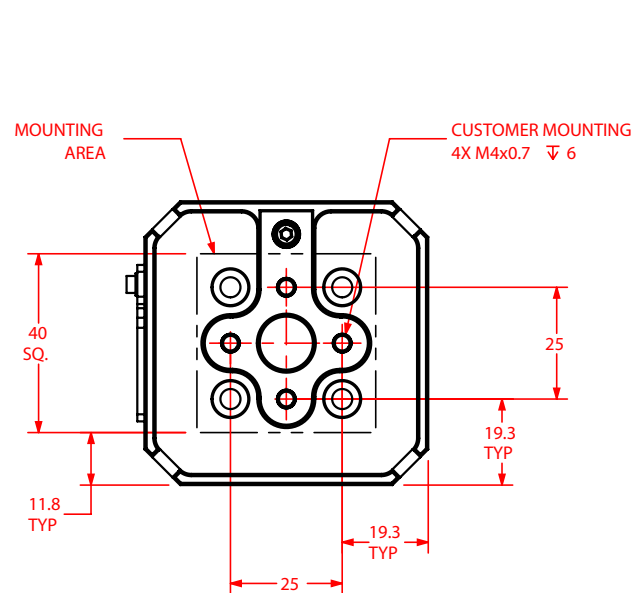
FiberMax_{HP}-ZXYTPR



DIMENSIONS: MILLIMETERS

FiberMax_{HP} Series DIMENSIONS

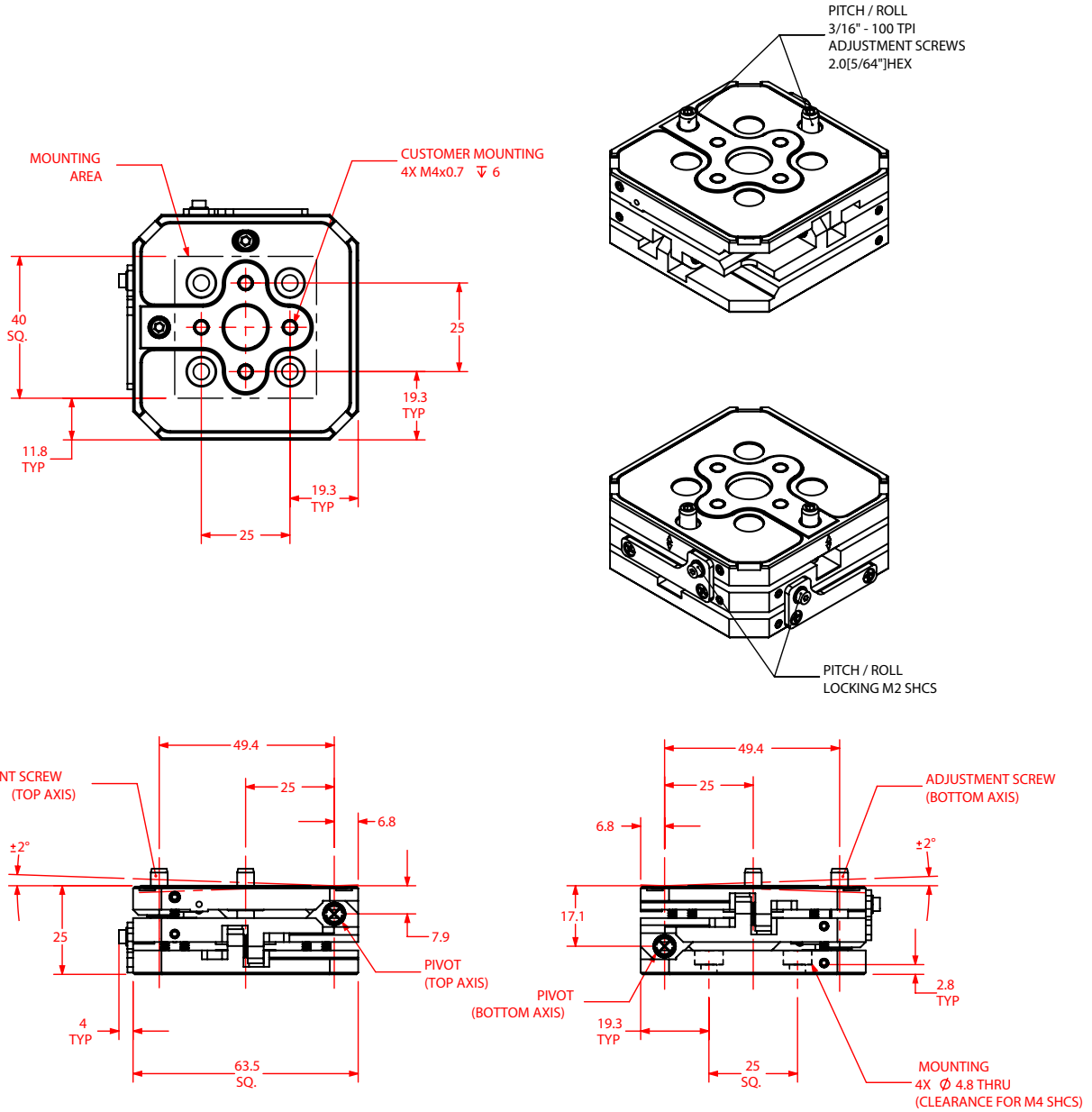
MADJ-AT1



DIMENSIONS: MILLIMETERS

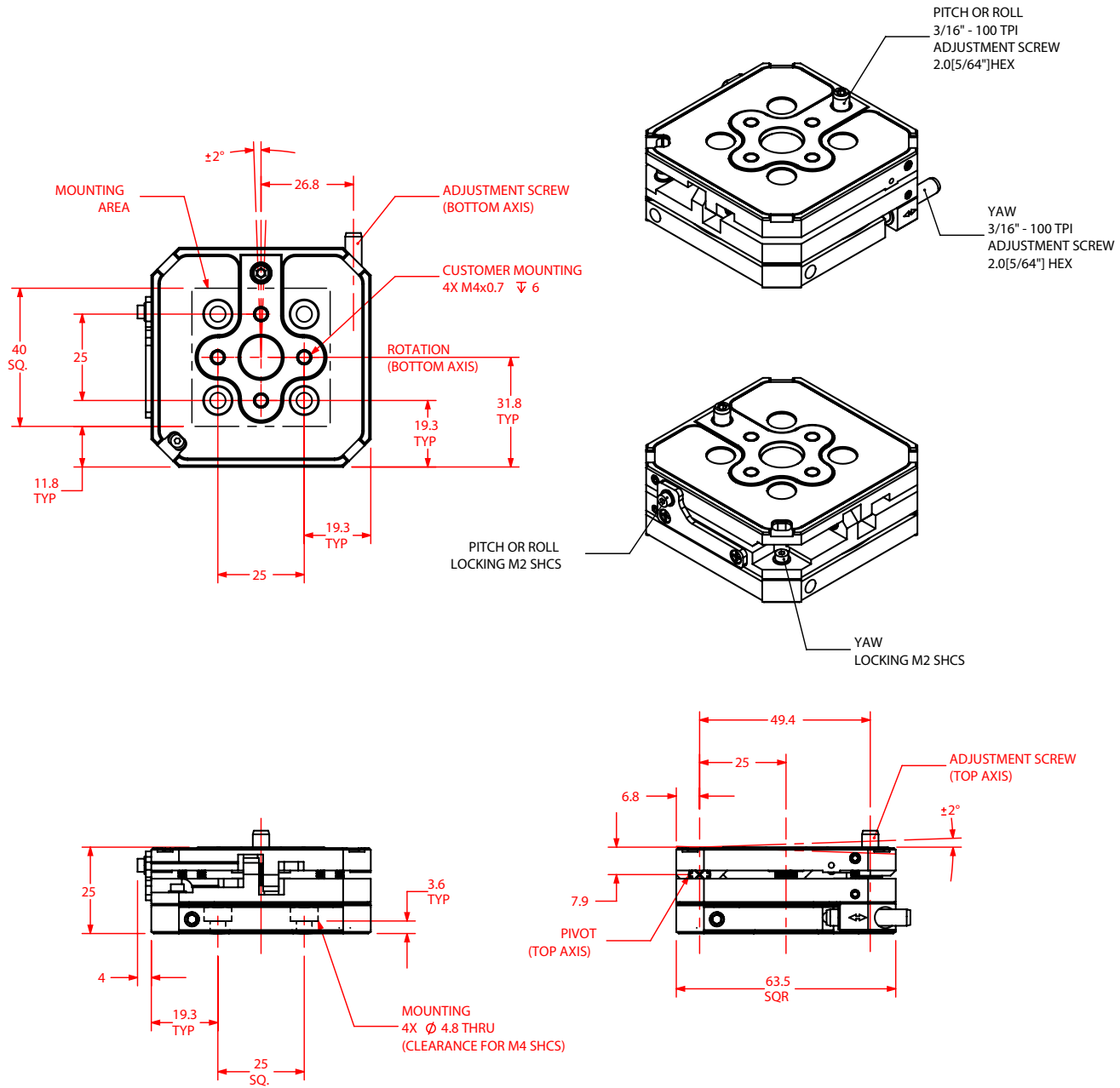
FiberMax_{HP} Series DIMENSIONS

MADJ-AT2



DIMENSIONS: MILLIMETERS

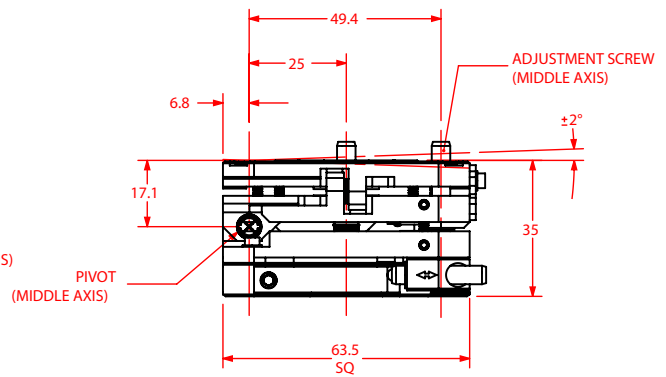
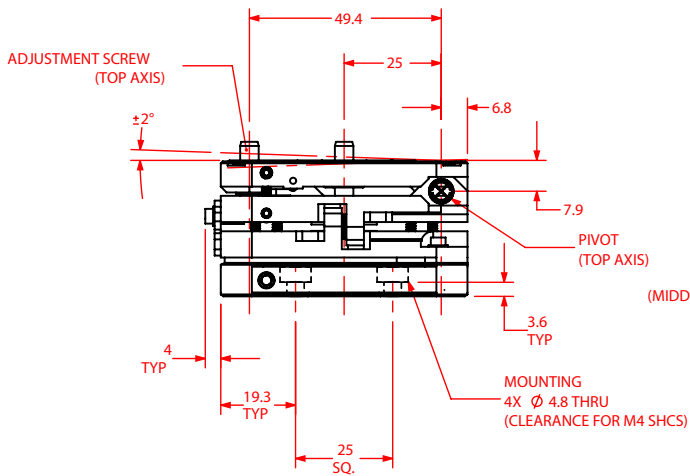
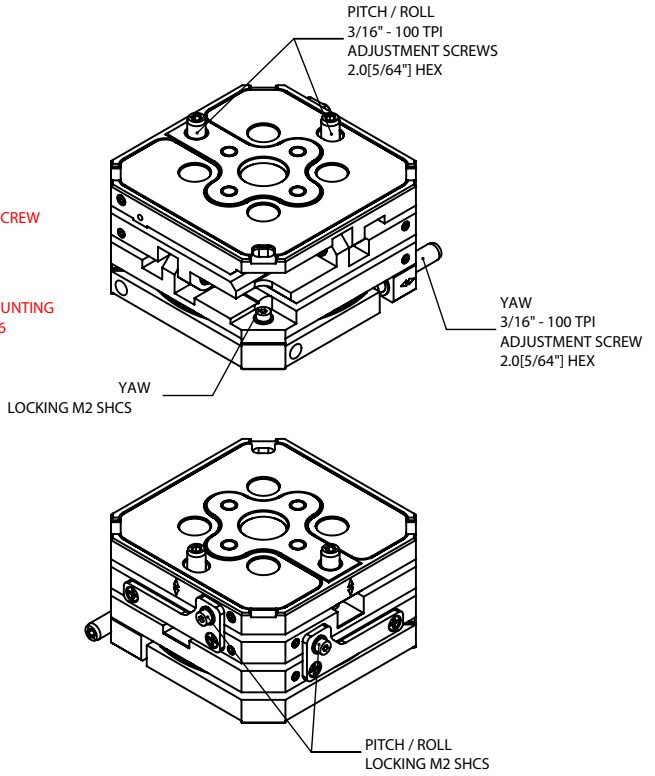
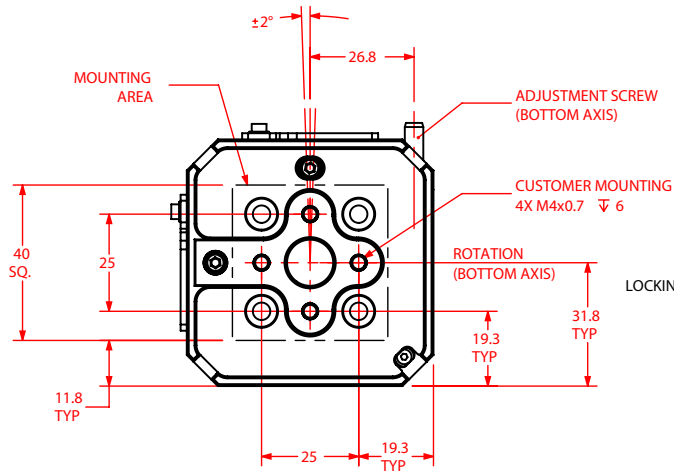
MADJ-AT3



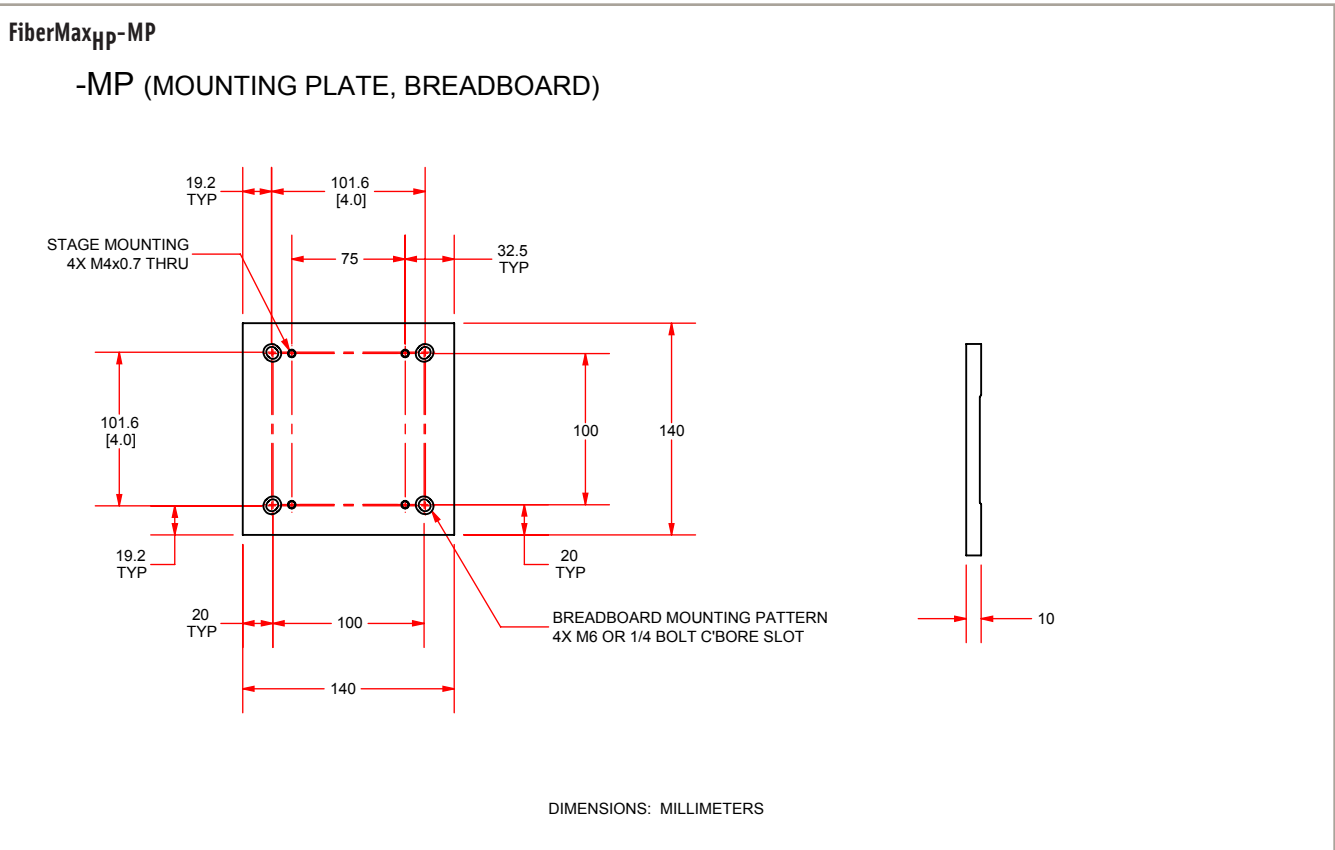
DIMENSIONS: MILLIMETERS

FiberMax_{HP} Series DIMENSIONS

MADJ-AT4



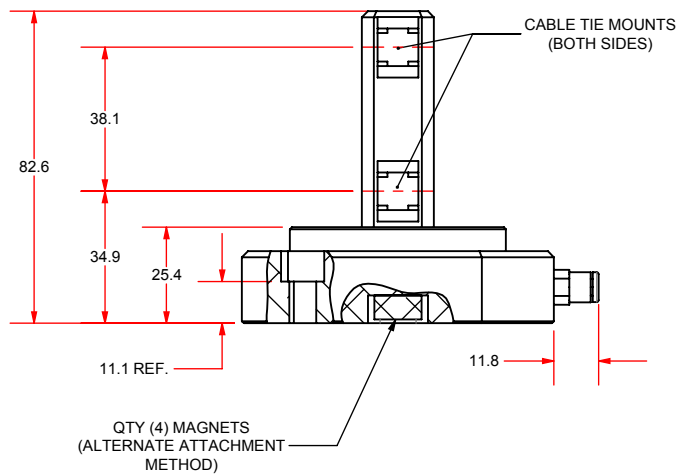
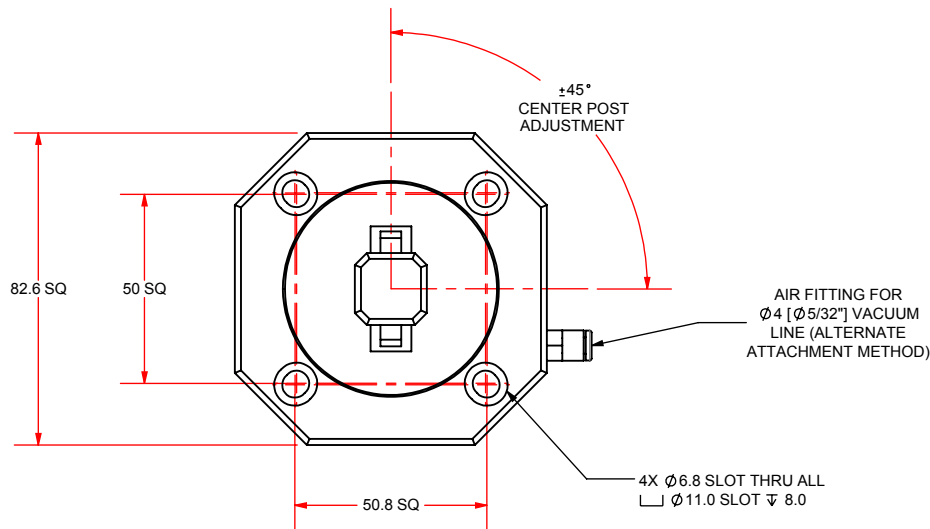
DIMENSIONS: MILLIMETERS



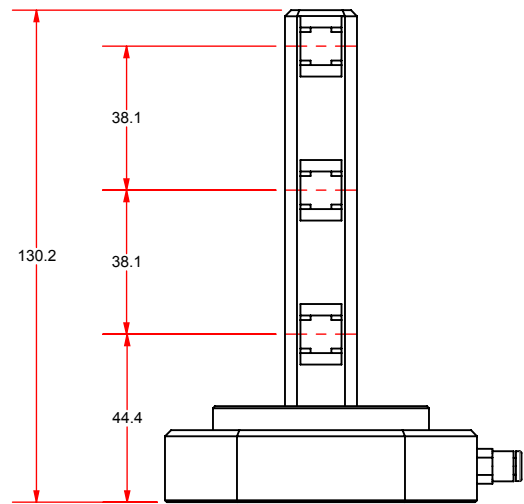
FiberMax_{HP} Series DIMENSIONS

FiberMax_{HP}-ACP

-CMS

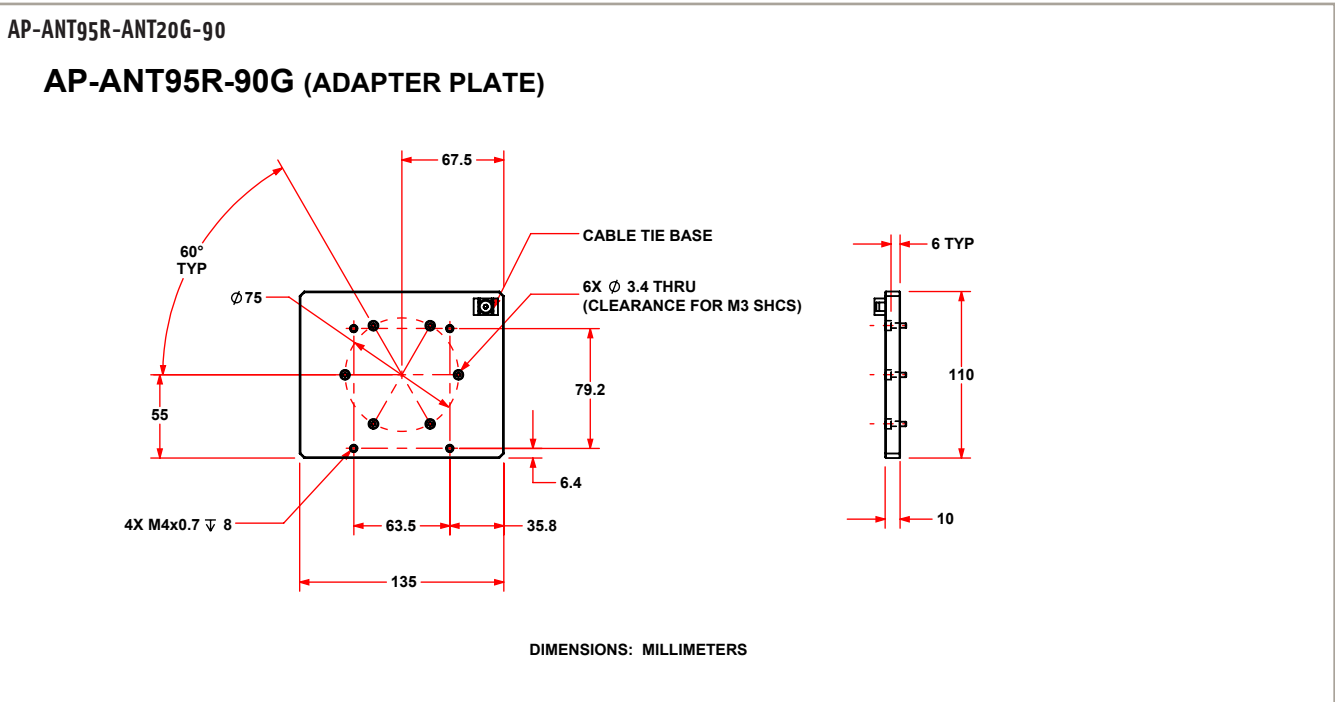
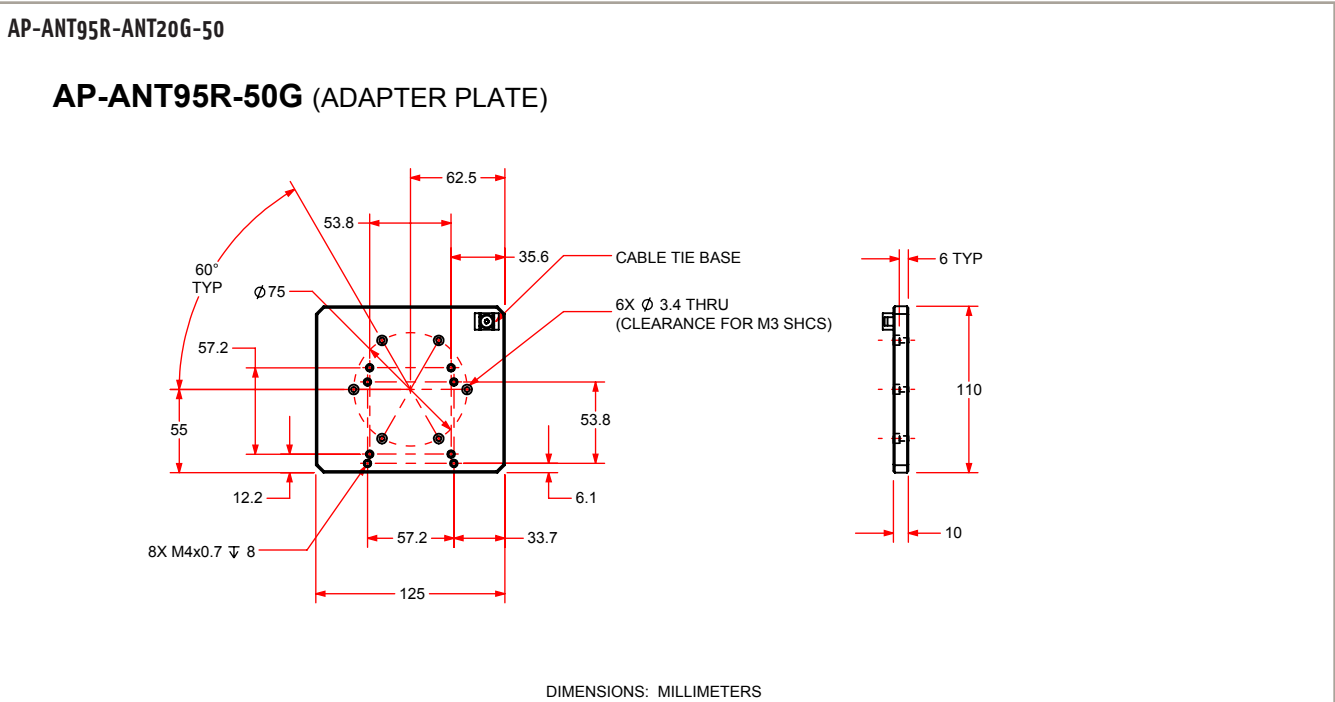


INCLUDED WITH:
- FIBERMAXHP-ZXY
- FIBERMAXHP-ZXYP
- FIBERMAXHP-ZXYR



INCLUDED WITH:
- FIBERMAXHP-ZXYT
- FIBERMAXHP-ZXYTP
- FIBERMAXHP-ZXYTR
- FIBERMAXHP-ZXYTPR

DIMENSIONS: MILLIMETERS



FiberMax_{HP} Series ORDERING INFORMATION

FiberMax_{HP} Multi-Axis Photonics Alignment System

Axis Configuration (Required)

-ZXY	3-axis platform (Z, X, Y)
-ZXYT	4-axis platform (Z, X, Y, Theta)
-ZXYP	4-axis platform (Z, X, Y, Pitch)
-ZXYR	4-axis platform (Z, X, Y, Roll)
-ZXYTP	5-axis platform (Z, X, Y, Theta, Pitch)
-ZXYTR	5-axis platform (Z, X, Y, Theta, Roll)
-ZXYTPR	6-axis platform (Z, X, Y, Theta, Pitch, Roll)

Manual Adjustment (Optional)

-ADJ1	3-axis manual angular adjustment (± 2 deg), Yaw/Pitch/Roll
-ADJ2	2-axis manual angular adjustment (± 2 deg), Pitch/Roll
-ADJ3	2-axis manual angular adjustment (± 2 deg), Yaw/Pitch
-ADJ4	2-axis manual angular adjustment (± 2 deg), Yaw/Roll
-ADJ5	1-axis manual angular adjustment (± 2 deg), Pitch
-ADJ6	1-axis manual angular adjustment (± 2 deg), Roll

Mounting Plate (Optional)

-MP1	Mounting plate for optical table mounting
------	---

Performance Level (Required)

-PL1	Base performance
-PL3	High-accuracy performance, PLUS

Integration (Required)

Aerotech offers both standard and custom integration services to help you get your system fully operational as quickly as possible. The following standard integration options are available for this system. Please consult Aerotech if you are unsure what level of integration is required, or if you desire custom integration support with your system.

-TAS	Integration - Test as system Testing, integration, and documentation of a group of components as a complete system that will be used together (ex: drive, controller, and stage). This includes parameter file generation, system tuning, and documentation of the system configuration.
-TAC	Integration - Test as components Testing and integration of individual items as discrete components that ship together. This is typically used for spare parts, replacement parts, or items that will not be used together. These components may or may not be part of a larger system.

Accessories (Ordered as Seperate Line Item)

AP-ANT95R-ANT20G-50	Adapter plate, ANT95R to ANT20G-50
AP-ANT95R-ANT20G-90	Adapter plate, ANT95R to ANT20G-90

Manual Angular Adjustment Stages

MADJ-AT1	1-axis, Pitch or Roll (± 2 deg)
MADJ-AT2	2-axis, Pitch/Roll (± 2 deg)
MADJ-AT3	2-axis, Yaw/Pitch or Yaw/Roll (± 2 deg)
MADJ-AT4	3-axis, Yaw/Pitch/Roll (± 2 deg)